

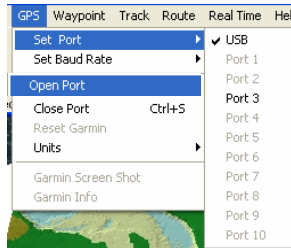
TREE TIPS



Technical Notes

GETTING STARTED

1. Plug your GPS unit into the computer.
2. Open DNR Garmin
3. Open the GPS menu: Set Ports and check the port that your GPS is plugged into. If you have a USB converter the port number will be 5 or higher.
4. DNR Garmin will now display your GPS unit type (Figure 1)



Step 3

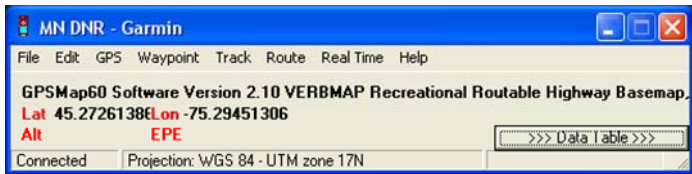
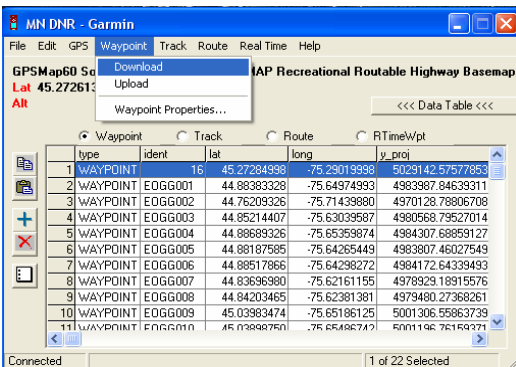


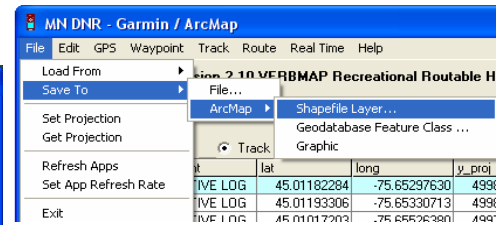
Figure 1: DNR Garmin Toolbar

FROM WAYPOINT TO SHAPEFILE

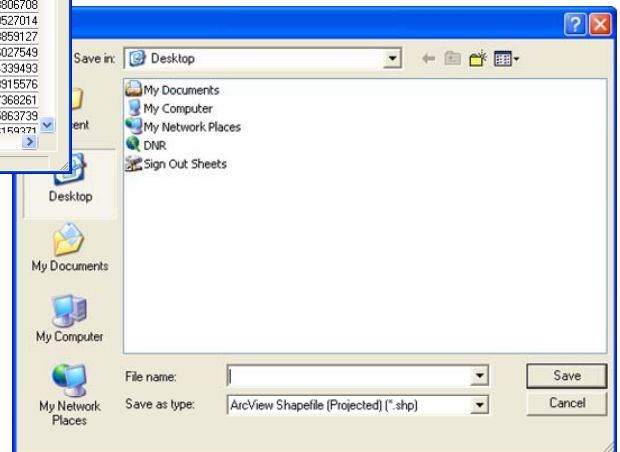
5. Open the Waypoint menu and click Download.
6. A list will have appeared of all the waypoints in the GPS. Select the points that you want downloaded by clicking them in the left margin or don't select any waypoints if you want to convert all of them. Open the File menu then select Save To.
7. The Save As window should be open. In the Save As Type menu at the bottom of the window choose ArcView Shapefile if it is not already chosen.



Step 5



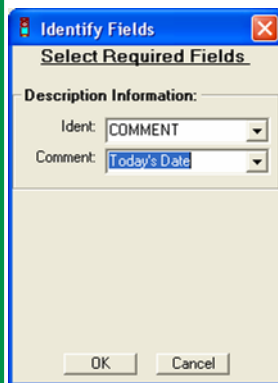
Step 6



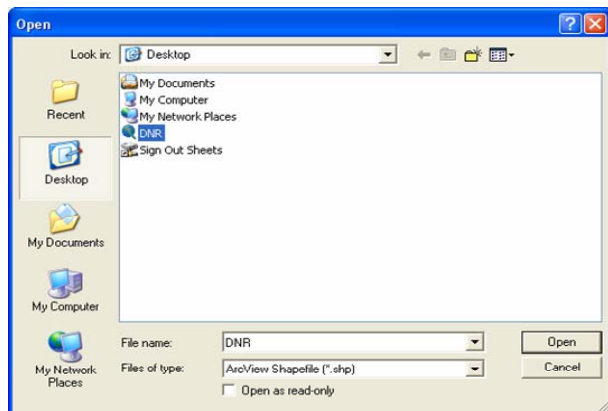
Step 7

FROM SHAPEFILES TO WAYPOINTS

8. Open the File Menu, select Load From and click File....
9. DNR Garmin may then ask you to identify the fields.
 - Ident: the field for the waypoint name.
 - Comment: Depending on the GPS unit, you may have a comment field for extra information.
10. Select the points that you want uploaded to your GPS or select none if you want all points loaded to your GPS.
11. Open the Waypoint menu, and then click Upload.



Step 9



Step 10: Load from File....



TREE TIPS

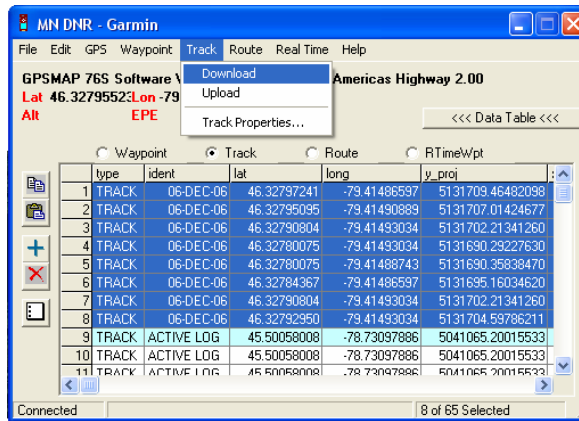
FROM TRACKS TO SHAPEFILES

12. Open the Track menu and click Download.
13. Select, from the list, the track that you want downloaded; all the points from a track will have the same value in the ident field.
14. Open the File menu then select Save To.
15. The Save As window should be open. In the Save As Type menu at the bottom of the window choose ArcView Shapefile if it is not already chosen.
16. At this point DNR Garmin will give the choice of making the track a series of points, a line, or a polygon.
 - The difference between the line and the polygon is that DNR Garmin will close the track by connecting the first and last points. So it is important to know if you were collecting a road or an area feature with your track beforehand.

FROM SHAPEFILES TO TRACKS

When a shapefile is loaded into a GPS unit using DNR Garmin as a track, the feature shows up as a grey background feature on the GPS map.

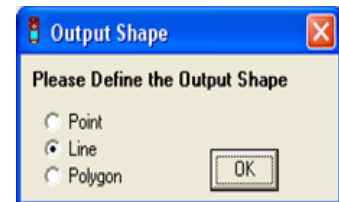
- Be careful when loading these types of shapefile into the GPS as they use a lot more memory than loading waypoints does.
17. Open the File menu, then Load From, then select the line or polygon shapefile to be loaded.
 18. Select the particular feature that you want loaded from the shapefile using the values in the ident field as a guide.
 19. Open the Track menu and click upload.



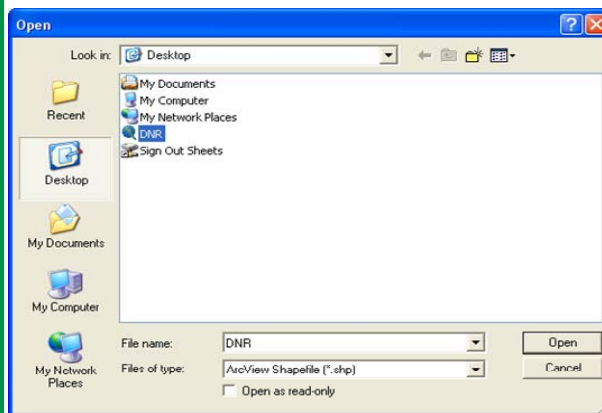
Step 13



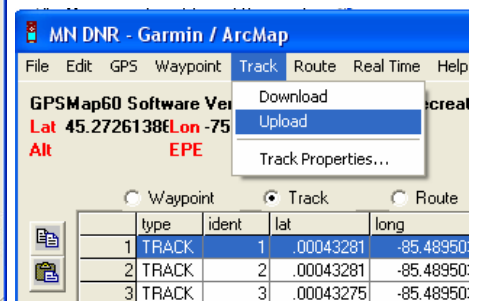
Step 15



Step 16



Step 17: Load from File....



Step 19

Publication Produced and Written By:
Paul Courville, December 2006.

To Download DNR Garmin go to:
<http://www.dnr.state.mn.us/mis/gis/tools/arcview/extensions/DNRGarmin/DNRGarmin.html>
 or search DNR Garmin